

Emerson-Garfield Neighborhood School Walkability

Meeting Objectives

- A. Data Review of current conditions near schools
- B. Share criteria options to help as a baseline for draft priorities
- C. Receive feedback and refinement from list of potential project areas
- D. Finalize neighborhood project priorities for future construction

Challenges to Walking

- Missing sidewalks
 - Lack of connectivity
- Sidewalks in poor shape
- Lack of ADA ramps and accessibility
- Lack of crosswalks



A. Data Review

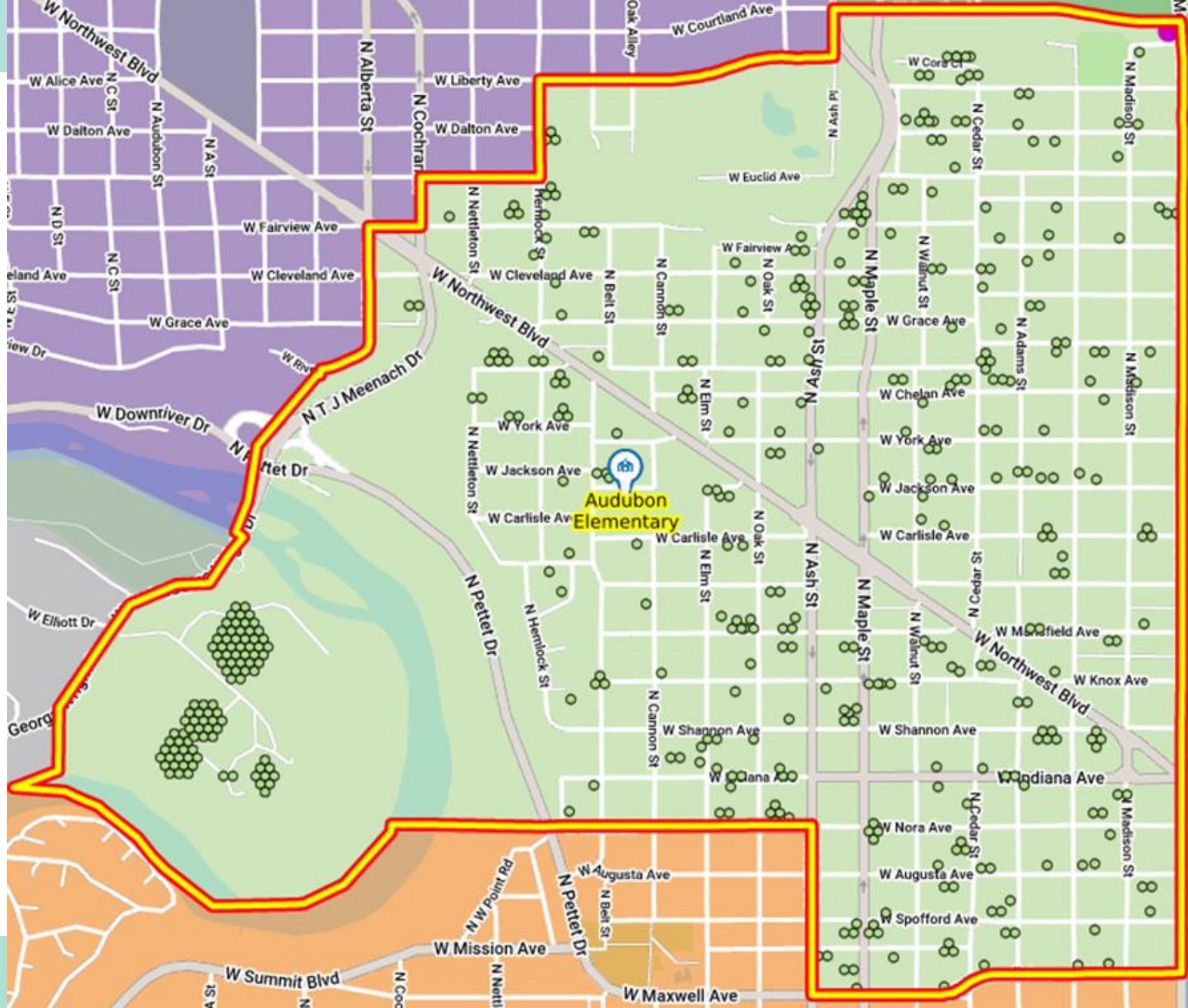
- Inventory of missing sidewalks
 - GIS map from City of Spokane
- Student location
 - General location provided by Spokane Public Schools
- School walking patterns
 - Spokane Public School maps

B. Criteria to Identify Priorities

- Proximity to school
 - Close – within 1/3 mile
 - Near – within 2/3 mile
 - Far – between 2/3 mile-1 mile
- Vehicle traffic patterns
 - Residential vs. arterial
- Increasing connectivity
 - Taking into account existing routes and filling in missing links
- Estimated number of students using based on student location
 - Students' location changes, however, with all the above criteria acknowledged, students for decades will still be accessing the school via the same streets students live on today



Audubon Elementary: Student Location



Principal Gillmer, Audubon Elementary

Student body:

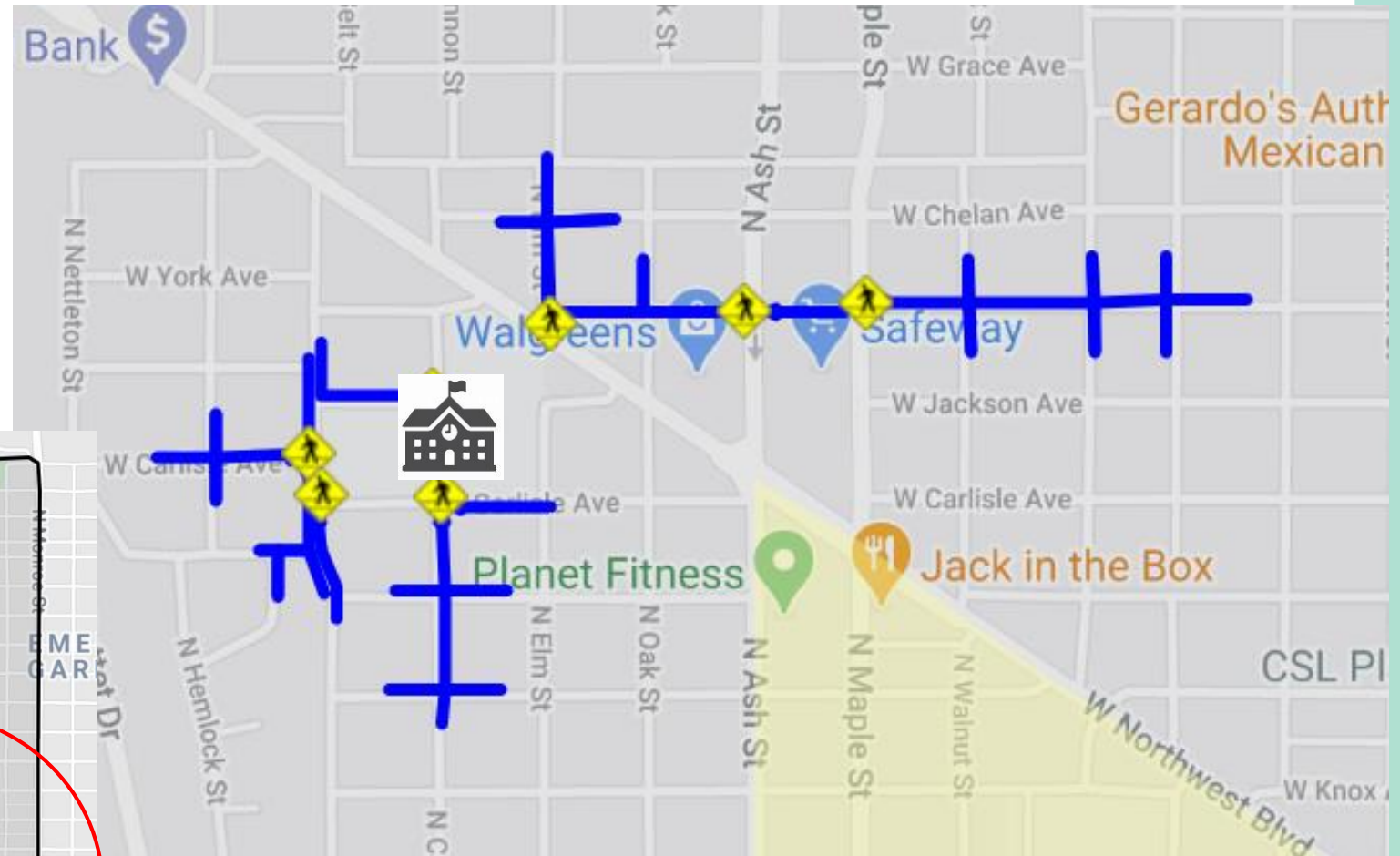
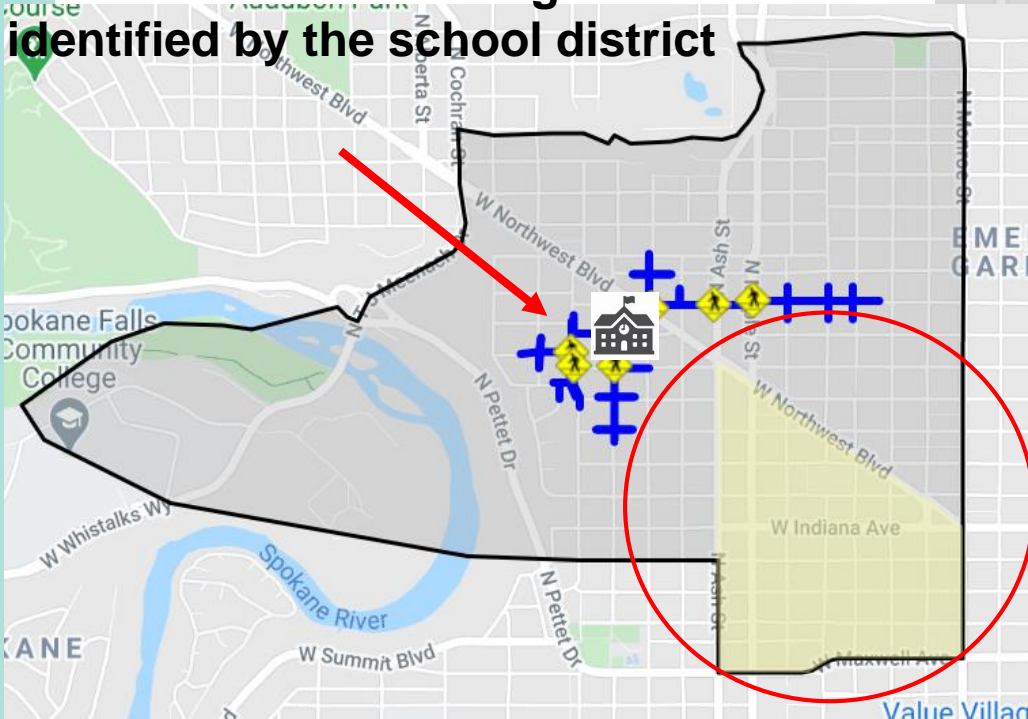
- 5-10 bikes when the weather permits.
- Approx. 300 students live within the 1-mile radius and are ineligible for bussing (some walk and some arrive by car)
- Approx. 150 students ride the bus
- Approx. 50 use daycare transportation

Barriers reported:

- unsafe activity in the neighborhood including impaired adults in the neighborhood interacting with students on their walk to/from school
- students feeling unsafe due to threats from other students/siblings
- students being too young to walk alone
- crossing major traffic patterns

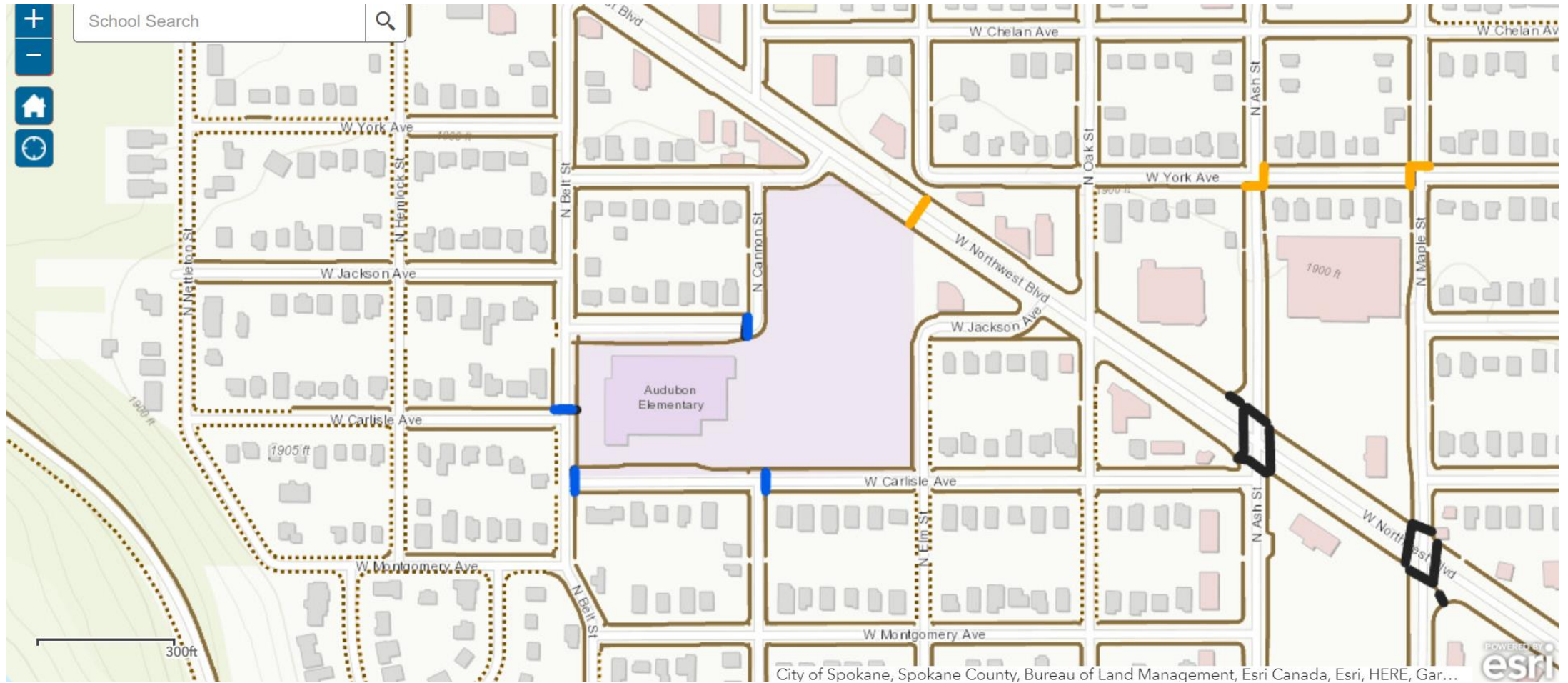
Audubon Elementary: School Boundary & Walking Routes

Blue lines show walking routes
identified by the school district



Bus zones
are in yellow

Audubon Elementary: City GIS Maps



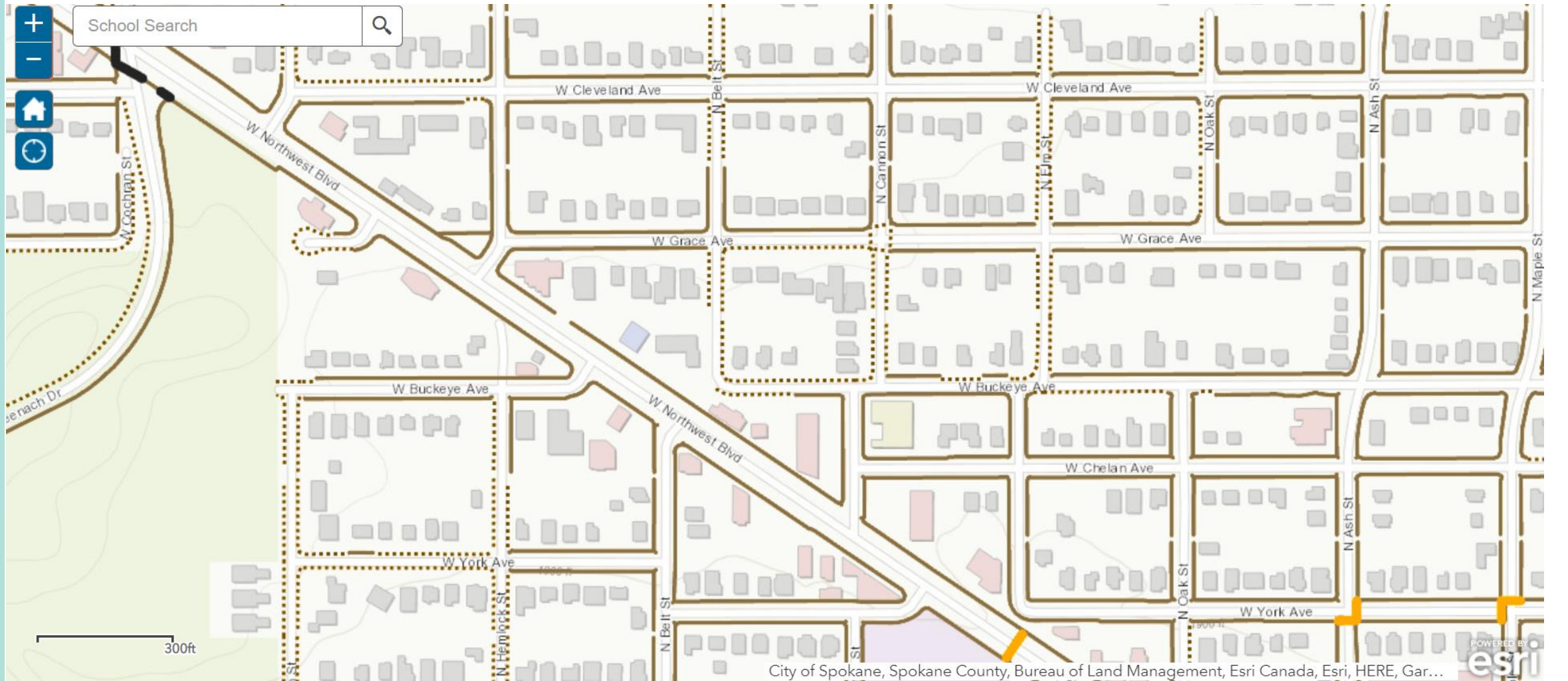
... Missing sidewalk
— Existing sidewalk

— Adult-patrolled crossing
— Crosswalk

— Student-patrolled crossing

Audubon Elementary: North View

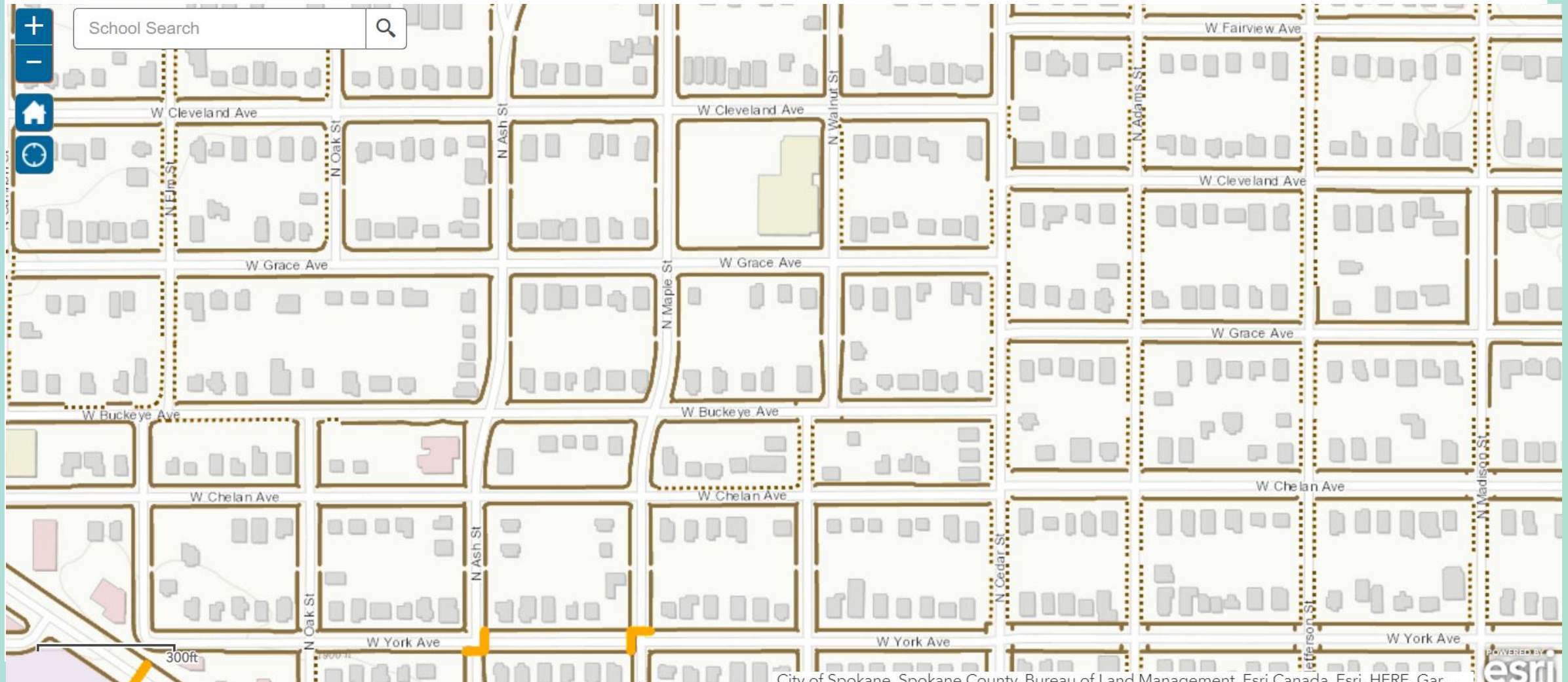
- ... Missing sidewalk
- Existing sidewalk
- Adult-patrolled crossing



City of Spokane, Spokane County, Bureau of Land Management, Esri Canada, Esri, HERE, Gar...

Audubon Elementary: Northeast View

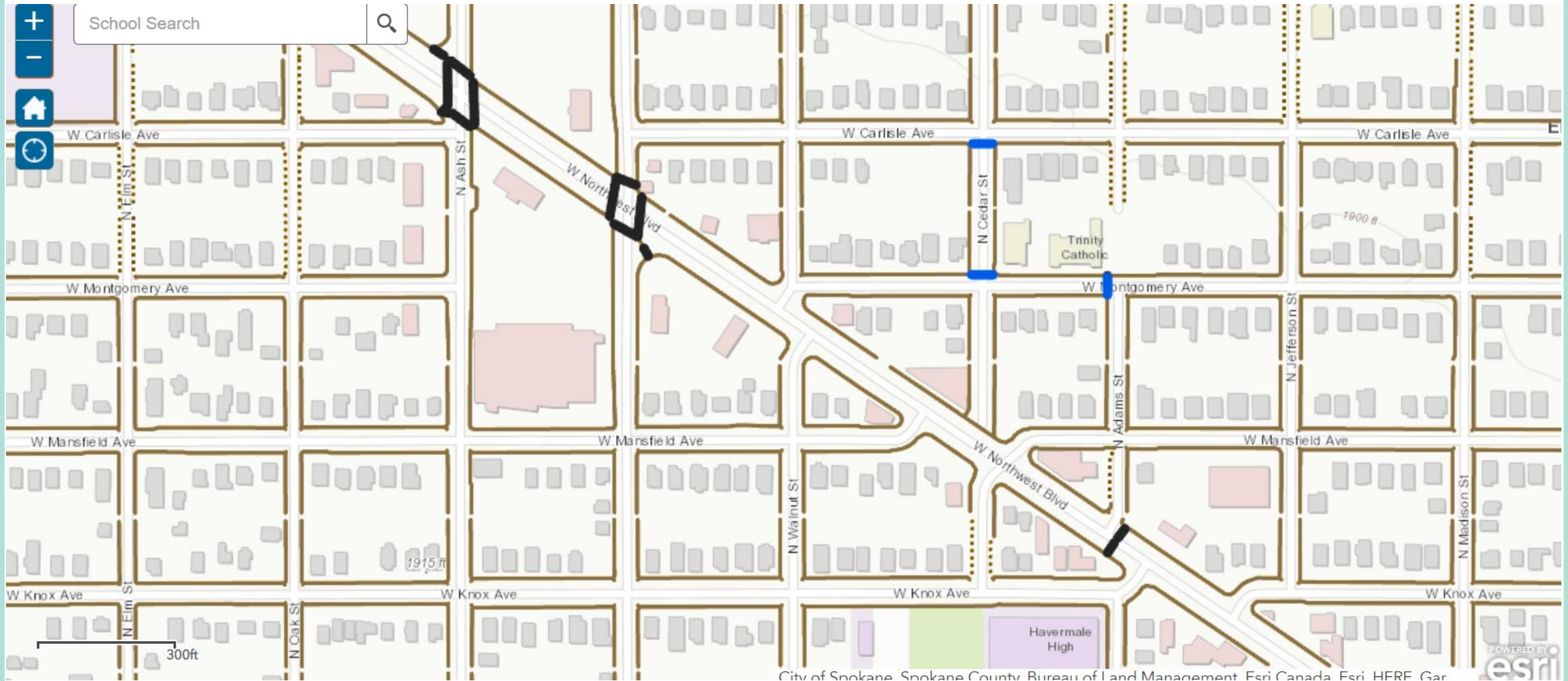
... Missing sidewalk
— Existing sidewalk
— Adult-patrolled crossing



The screenshot shows a web-based map application with a search bar at the top left containing the text "School Search". The map displays a street grid in Spokane, Washington, with streets labeled including W York Ave, W Jackson Ave, W Carlisle Ave, and W Montgomery Ave. A scale bar at the bottom left indicates 300 feet. The map is powered by Esri, as indicated by the logo at the bottom right.

Student-patrolled crossing

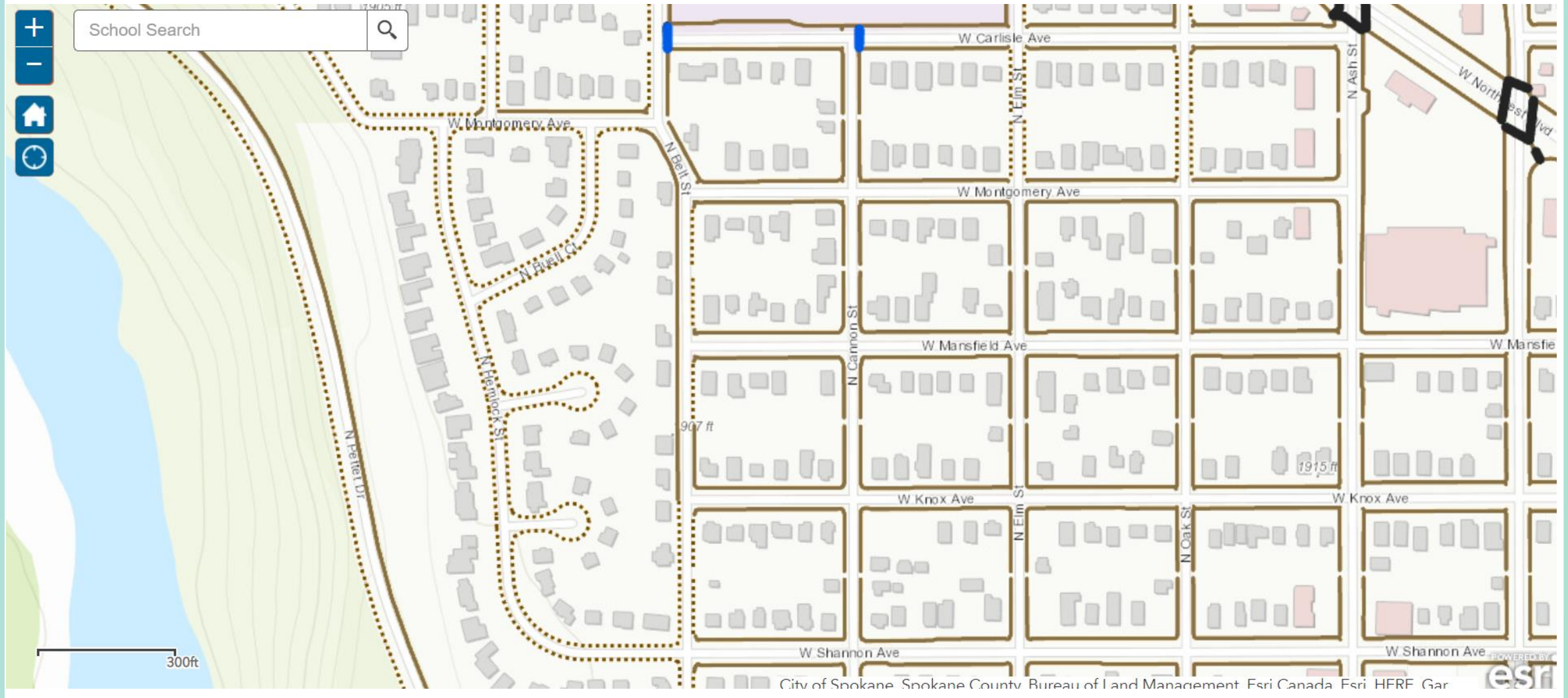
Audubon Elementary: Southeast View



— Student-patrolled crossing
— Crosswalk

--- Missing sidewalk
— Existing sidewalk

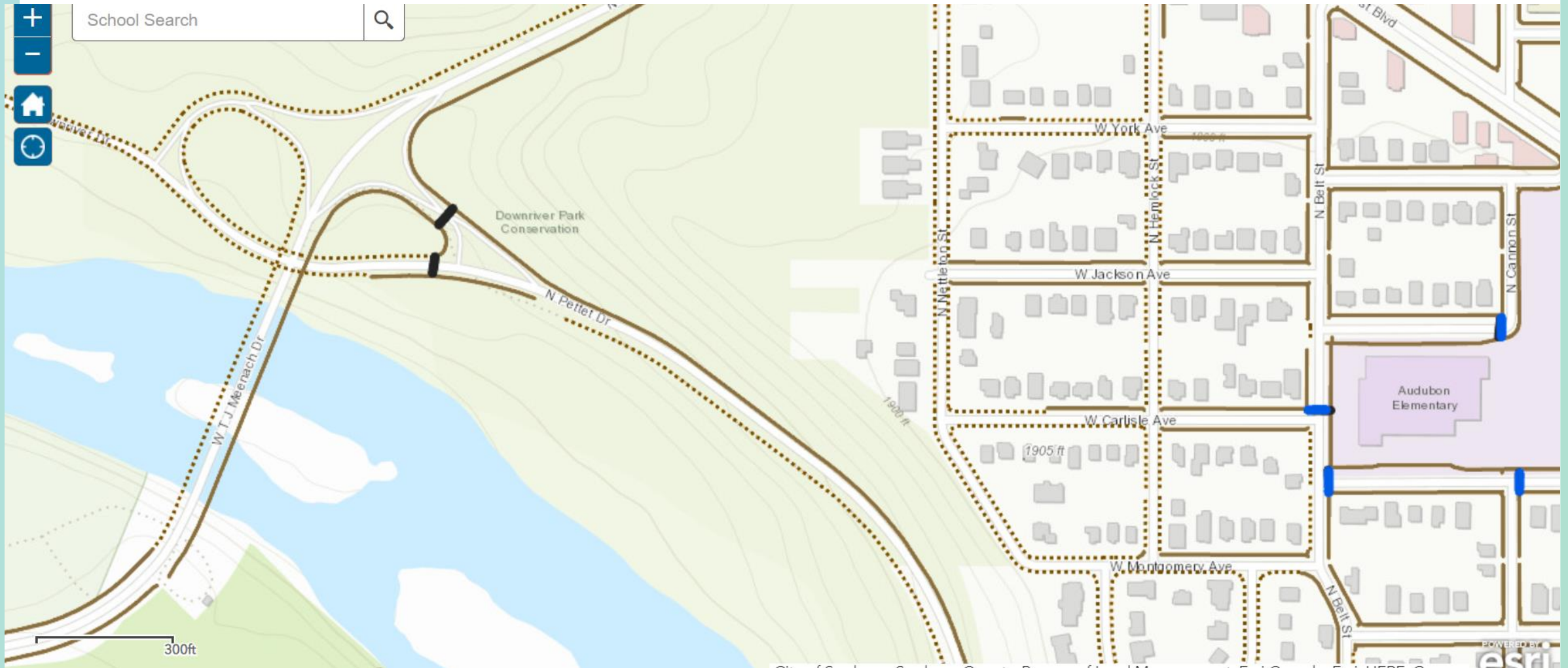
Audubon Elementary: South View



— Student-patrolled crossing
— Crosswalk

--- Missing sidewalk
— Existing sidewalk

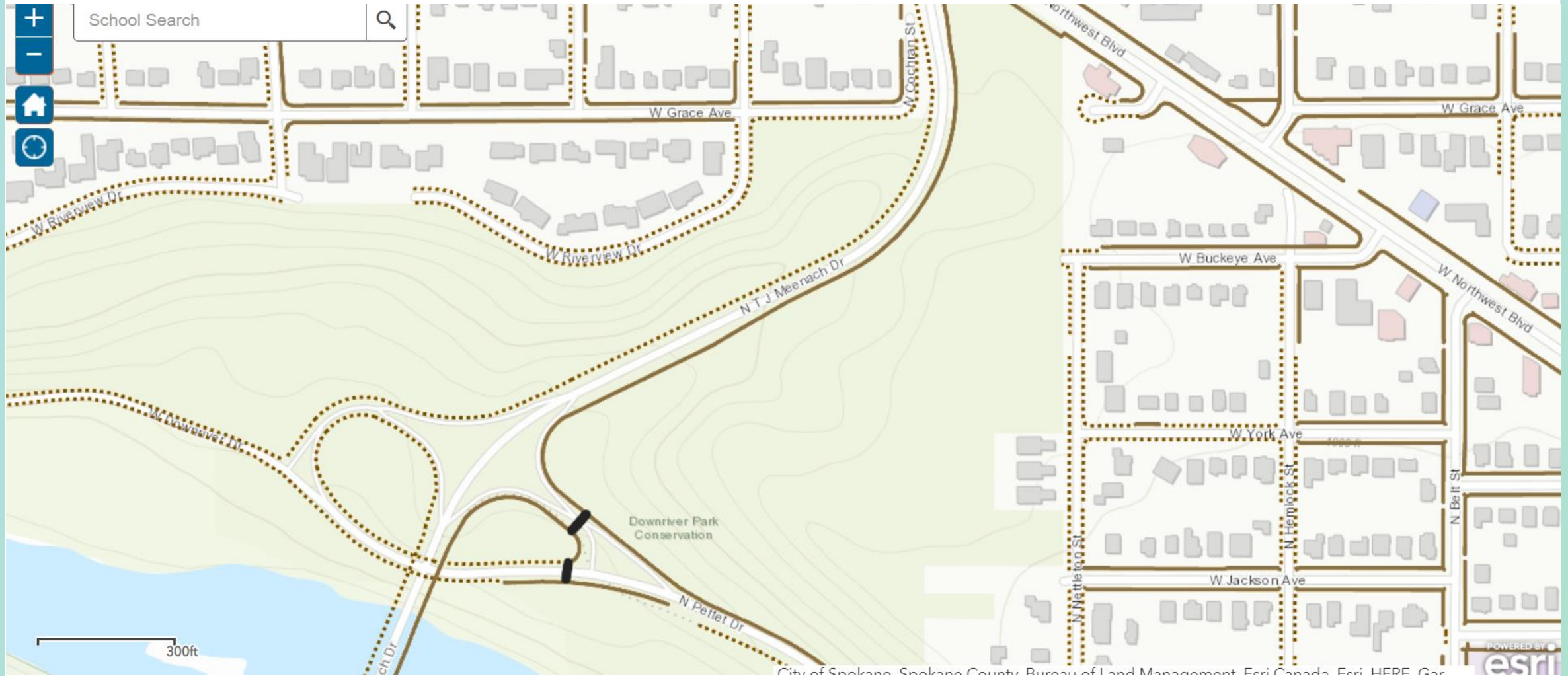
Audubon Elementary: West View



— Student-patrolled crossing
— Crosswalk

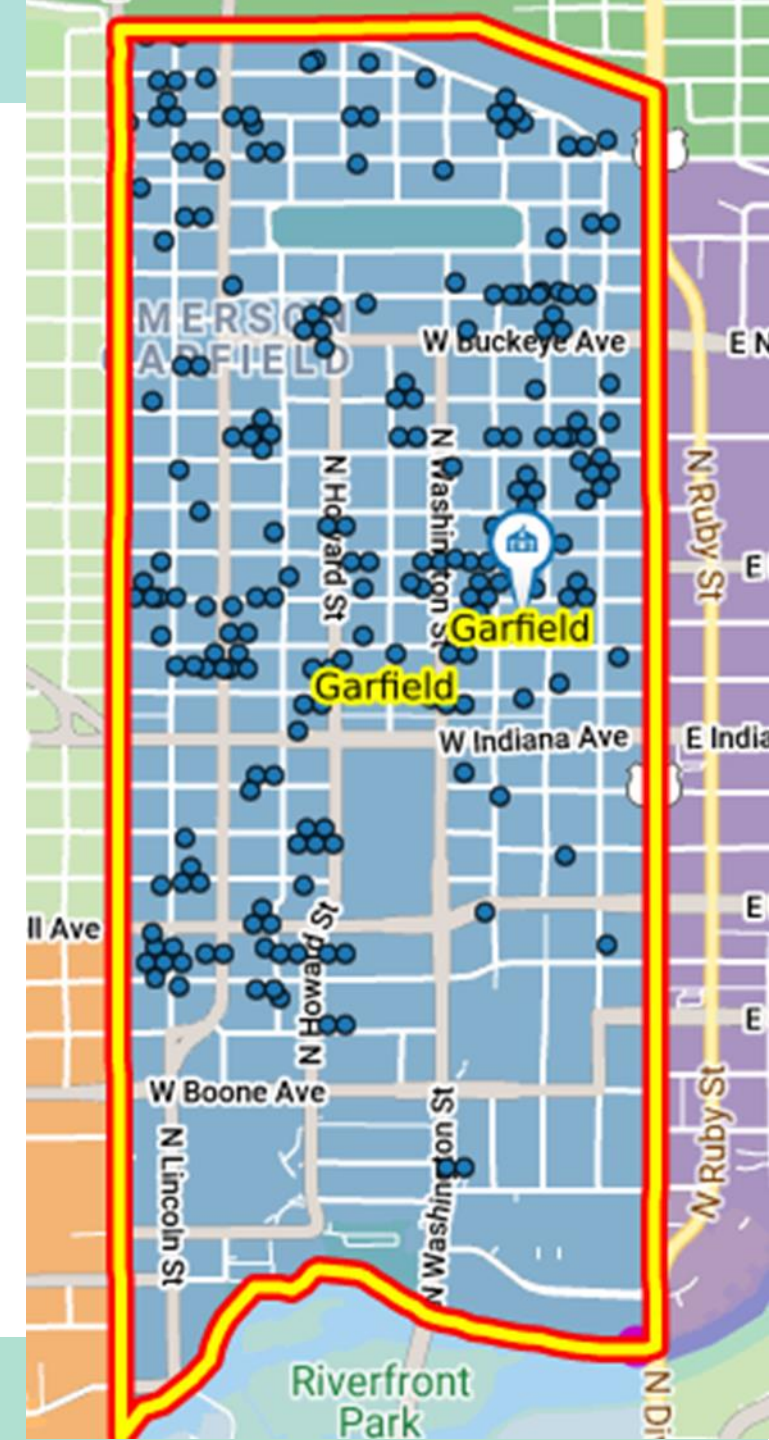
... Missing sidewalk
— Existing sidewalk

Audubon Elementary: Northwest View



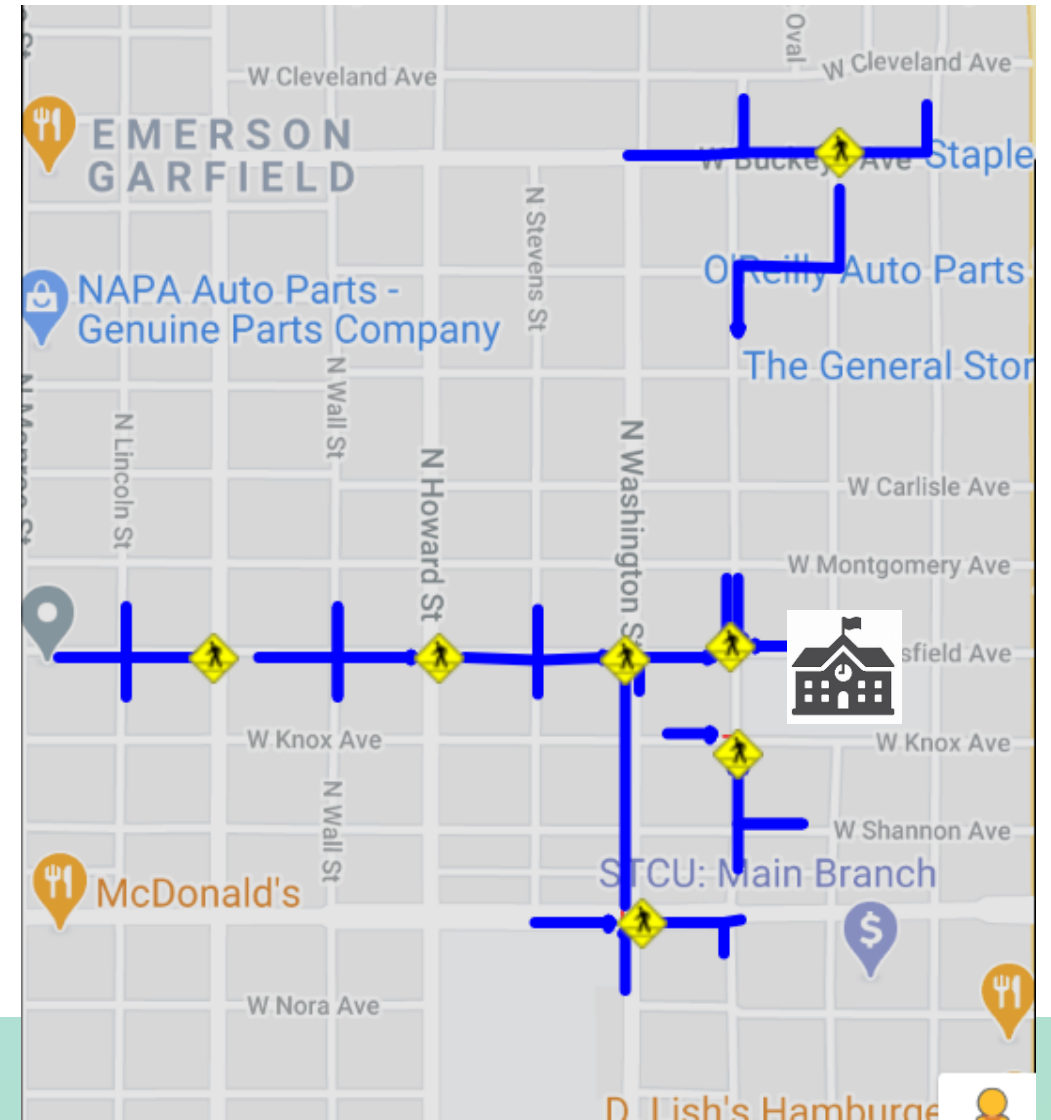
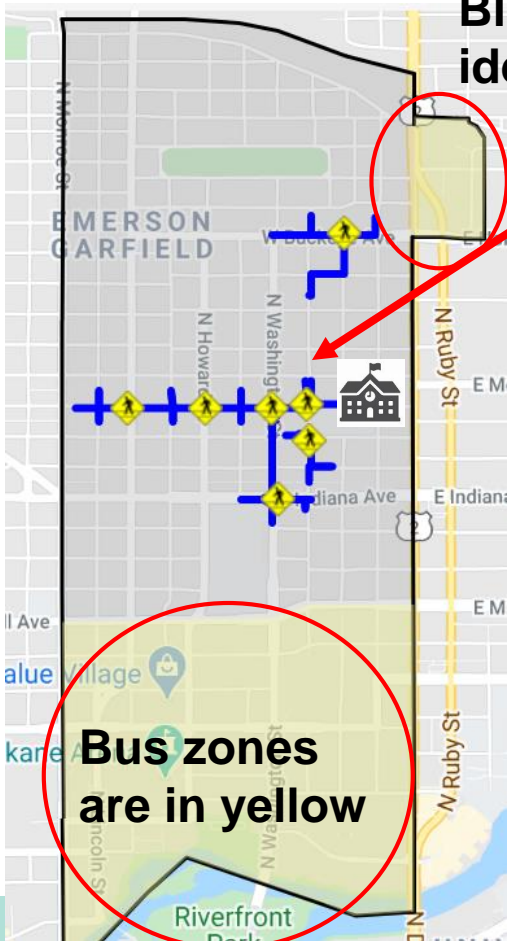
--- Missing sidewalk
— Existing Sidewalk

Garfield Elementary: Student Location

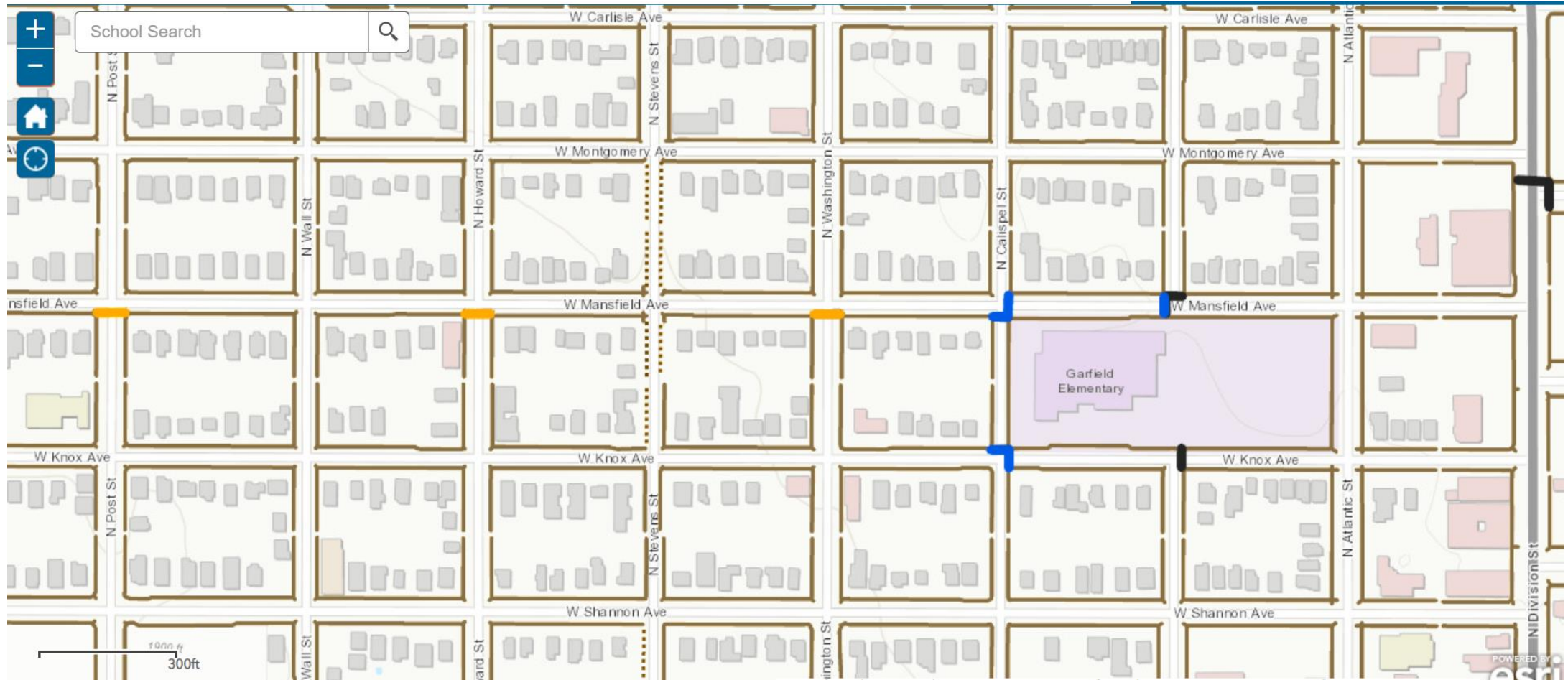


Garfield Elementary: School Boundary & Walking Routes

Blue lines show walking routes identified by the school district



Garfield Elementary: City GIS Maps



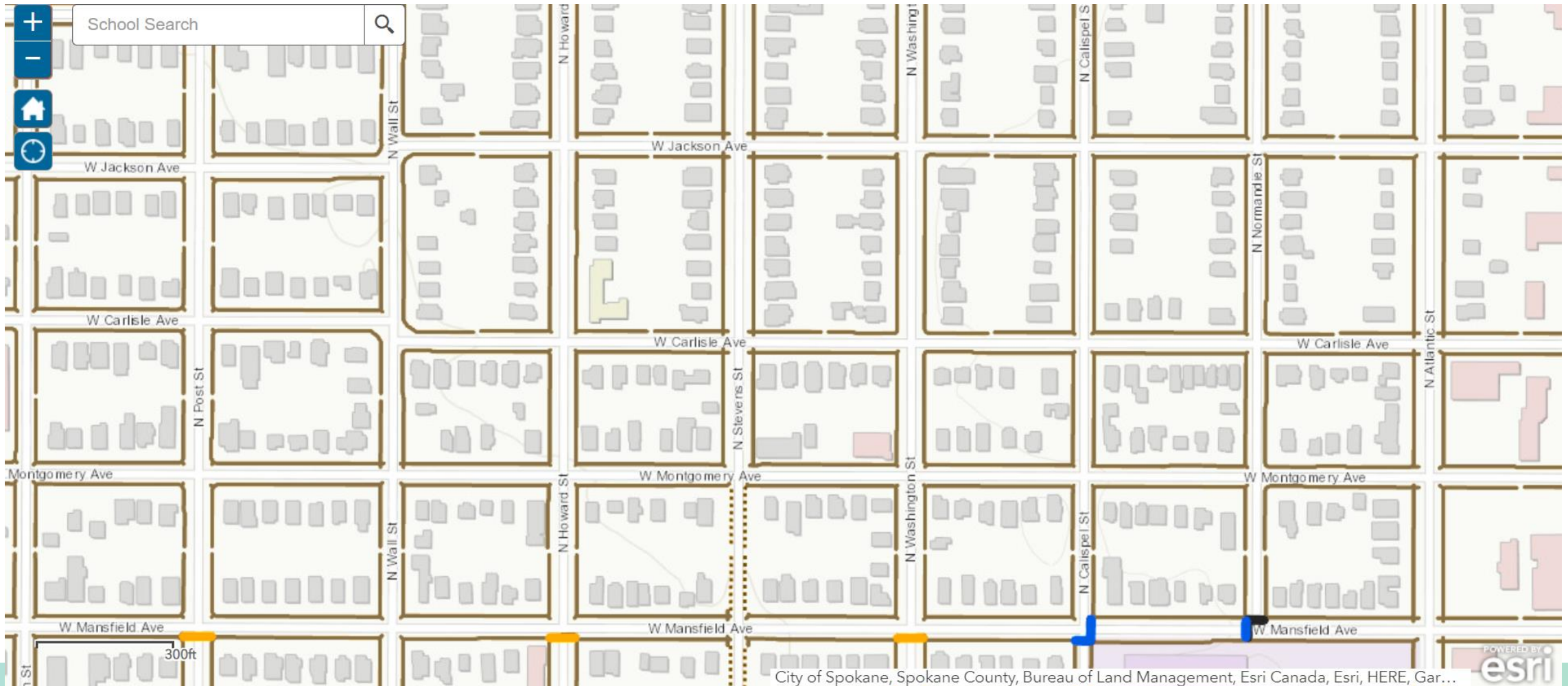
... Missing sidewalk
Existing Sidewalk

— Adult-patrolled crossing
Crosswalk

— Student-patrolled crossing

Garfield Elementary: North View

- ... Missing sidewalk
- Existing Sidewalk
- Student-patrolled crossing
- Adult-patrolled crossing



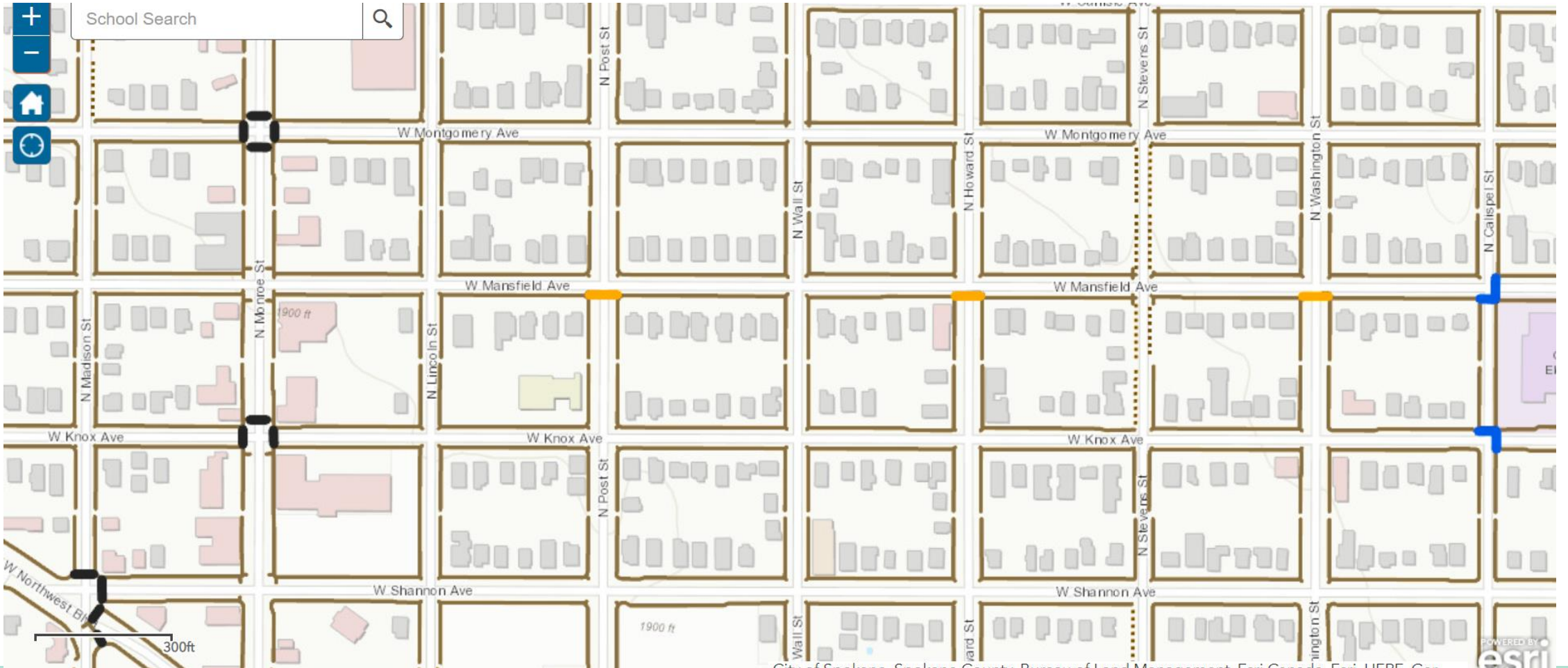
Garfield Elementary: North View 2

- ... Missing sidewalk
- Existing sidewalk
- Crosswalk
- Adult-patrolled crosswalk



Garfield Elementary: West View

- Missing sidewalk
- Existing Sidewalk
- Student-patrolled crossing
- Adult-patrolled crossing
- Crosswalk



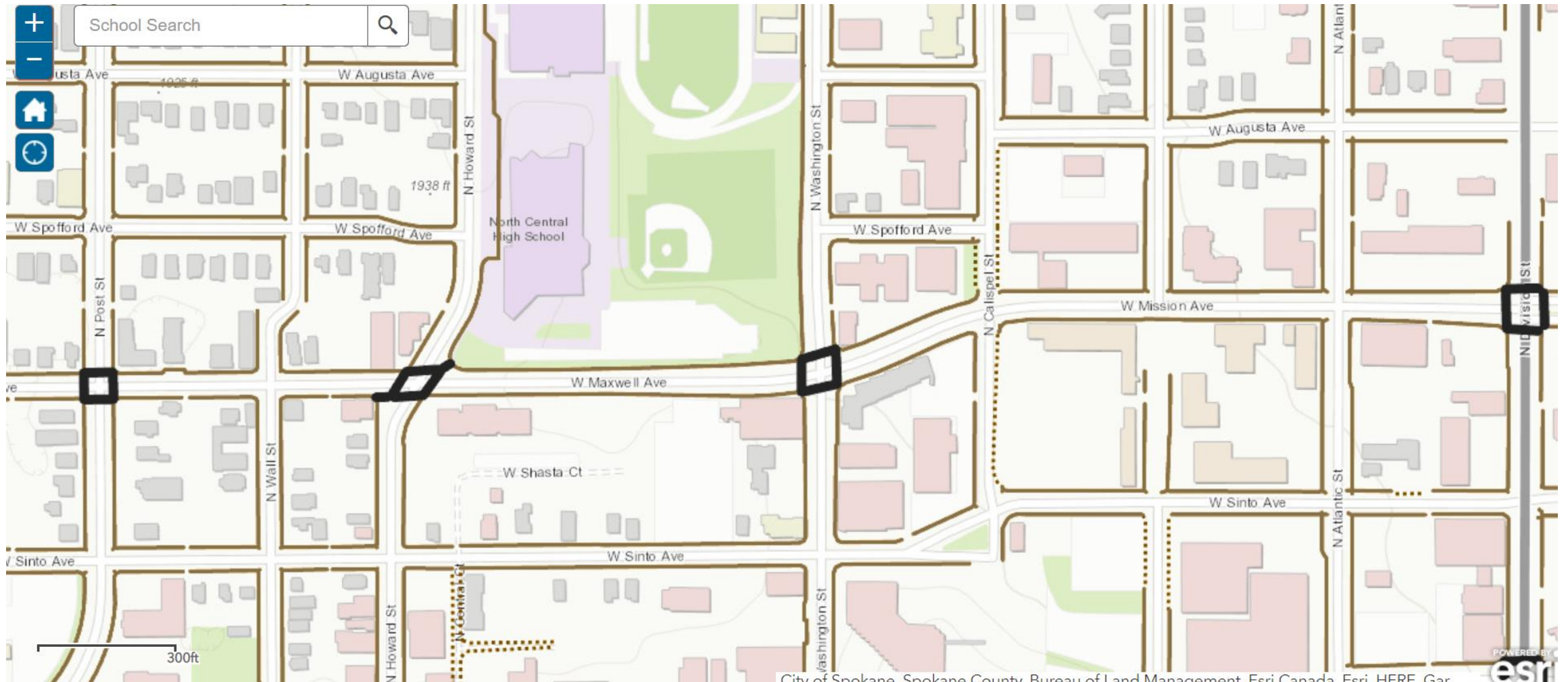
Garfield Elementary: South View

- Missing sidewalk
- Existing Sidewalk
- Student-patrolled crossing
- Crosswalk



Garfield Elementary: South View 2

- ... Missing sidewalk
- Existing sidewalk
- Crosswalk



Prioritization Tool

- Help identify priorities based on the data available
- Assign numerical value to the criteria for the identified street(s)
- Combine the values and determine the highest-ranking priority



School Walkability Prioritization Tool

Street(s): _____

Proximity to School	
Close - within 1/3 mile	5
Near - within 2/3 mile	3
Far - within 1 mile	1
	Points

School-Identified Walking Route	
On-route	5
Feeds into directly	3
Feeds into indirectly	1
	Points

Student Location	
>10	5
>5	3
>2	1
	Points

Traffic Patterns	
Arterial >30mph	5
Residential	3
Alley or cul-de-sac	1
	Points

Connectivity	
Connects to sidewalks	5
Connects existing sidewalks	3
	Points

	Total
--	-------

D. Feedback and Finalize Priorities

- Using this data, and your knowledge of the neighborhood, your neighborhood can identify and prioritize future sidewalk projects based on this information provided
 - Walking routes outlined by school district
 - Student location
 - Missing sidewalks

Submission Process



Contact

- Ryan Torpie
 - Temporary Project Manager, District 3 School Walkability Project
 - rtorpie@spokanecity.org
- Annica Eagle
 - Community Programs Coordinator, Office of Neighborhood Services
 - aeagle@spokanecity.org
- Shauna Harshman
 - City Council Manager of Neighborhood Connectivity Initiatives
 - sharshman@spokanecity.org

