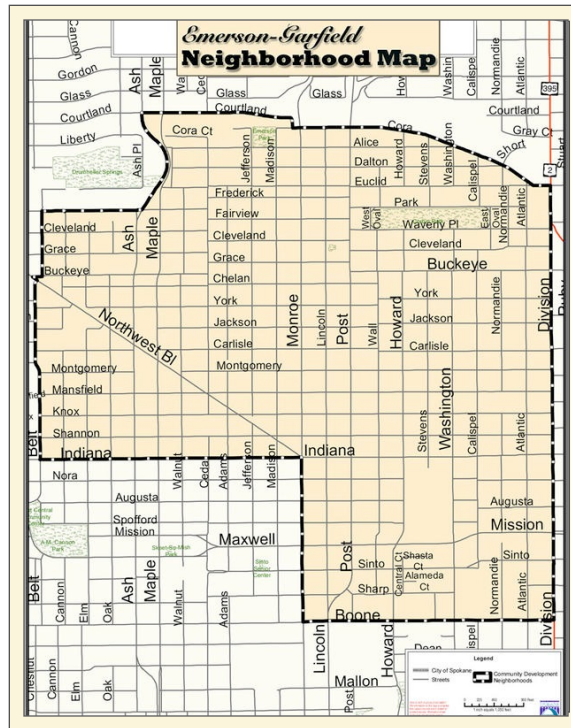




HANDY PHONE NUMBERS

Abandoned vehicles:	625-4246
Alley paving:	625-6700
Spokane City Council:	625-6255
Code enforcement:	625-6083
COPS North Central:	625-3348
Crime Check:	456-2233
Emerson Community Garden:	863-5133
Health & Human Services:	211
Mayor of Spokane	625-6250
Office of Neighborhood Services:	625-6730
Parks:	363-5455
Parking enforcement:	232-8800
Pothole repair:	625-7733
Street light outages:	489-0050
Utility billing:	625-6000



WHAT DEFINES EMERSON-GARFIELD?

The rough borders of our neighborhood are Cora to the north, Division to the east, Boone to the south and Belt to the west. The map above shows the slight notch to the southwest that is part of West Central. The small-business corridor of North Monroe bisects Emerson-Garfield.

By combining the names of two nearby schools (Emerson no longer exists; the site is now a park), these boundaries were created by city planners in the 1970s. In some ways, then, they are artificial. At the same time, these borders are a natural extension of the social and commercial makeup of this area.

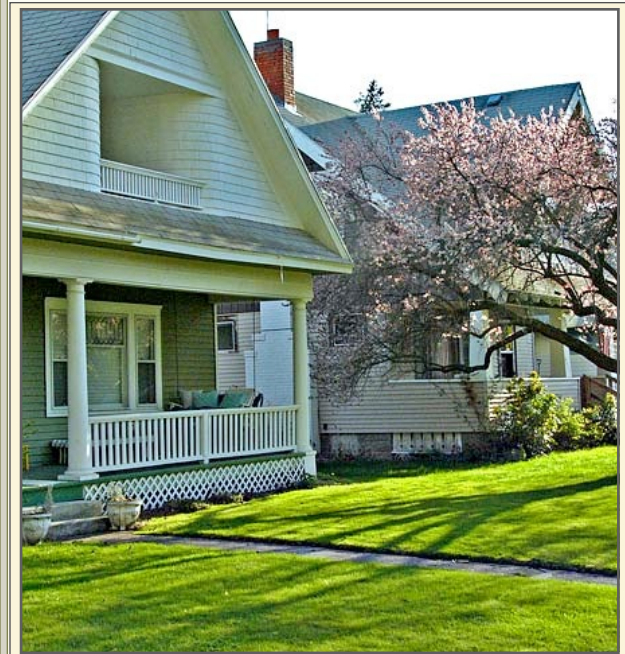
VISIT US ONLINE AT:

EMERSONGARFIELD.ORG



EMERSON GARFIELD

NEIGHBORHOOD COUNCIL



ABOUT US

The Emerson-Garfield Neighborhood Council (EGNC) is an active, all-volunteer organization that is dedicated to improving our neighborhood in various ways. It does so by creating and supporting neighborhood events, by giving the neighborhood a unified voice at the city level, and by providing a constructive public forum for residents, business owners and community leaders.

We encourage you to become involved and have a say in the future of your neighborhood!

EGNC MEETING SCHEDULE



Neighborhood council meetings generally take place on the second Wednesday of each month. They start at 6pm at the Corbin Senior Center.

2015	2016
FEBRUARY 11	FEBRUARY 10
MARCH 11	MARCH 9
APRIL 8	APRIL 13
MAY 13	MAY 11
JUNE 10	JUNE 8
AUG. 12 POTLUCK	AUG. 10 POTLUCK
SEPTEMBER 9	SEPTEMBER 14
OCTOBER 14	OCTOBER 12
NOVEMBER 11	NOVEMBER 9
DEC. 9 POTLUCK	DEC. 14 POTLUCK

Common Neighborhood Topics

CRIME

The issue of crime – such as graffiti, burglary or car prowling – is often addressed in neighborhood council meetings. The EGNC can help alert you of crime hotspots or let you share your firsthand experience with crime with your neighbors. A member of the Spokane Police Department is usually on hand to describe current crime trends, prevention methods and recourse for victims.

SIDEWALKS AND STREET TREES

Is the sidewalk in front of your home or place of business crumbling? Shifted by tree roots? Or maybe it's missing altogether? In the early spring, the EGNC takes sidewalk installation and repair requests and passes them on to the appropriate department at the city.

As for street trees, over time they can become overgrown or even die. The EGNC can instruct you on how to request pruning or removal from the city. We can also assist your request to have street trees planted, since they help beautify the neighborhood, protect homes against the elements and even help slow speeding traffic.

TRAFFIC

Emerson-Garfield is largely a 25mph residential zone. Even the North Monroe corridor is only 30mph. But that often isn't enough to discourage cars from using some streets as cut-throughs to major arterials like Division, Maple, Ash and Northwest Boulevard. The good news is that you can do something to stop dangerous or inconsiderate drivers.

Every year the EGNC solicits requests for traffic-calming proposals, which can be anything from speed-limit signs to traffic circles. We then vote on the most important proposal and forward it to the City of Spokane for consideration.

COMMUNITY DEVELOPMENT

Emerson-Garfield is a Housing and Urban Development (HUD)-eligible neighborhood. That means we receive money on behalf of the federal government each year to allocate toward capital improvements via the City of Spokane. Money for things such as sidewalks, home rehabilitation and community centers comes out of these funds based on input from the EGNC.

BUSINESSES

The EGNC is a big proponent of neighborhood businesses and is constantly looking for ways to support their owners. Sometimes this can be as simple as helping to spread the word about sales, events, and other news through our social media channels. Or it can be as ambitious as creating and co-hosting a neighborhood event.

CHURCHES AND SCHOOLS

The health of a neighborhood can frequently be measured by the health of its schools and community organizations. The EGNC has been working toward building stronger partnerships with schools and churches in a variety of ways. We have found that the goals of Emerson-Garfield's educational and faith-based institutions are generally the same as its residents.

CODE ENFORCEMENT

Although neighborly differences of opinion can usually be resolved through friendly discussion, there are times when that falls short. Code enforcement provides Spokane residents with a way to redress outbuildings that are too close to the property line, "spite fences," constantly barking dogs, or buildups of trash in neighbors' yards. The EGNC can provide you with code violation forms and assist you in filling them out. You can also visit beautifyspokane.org

